

DUCTFORMER

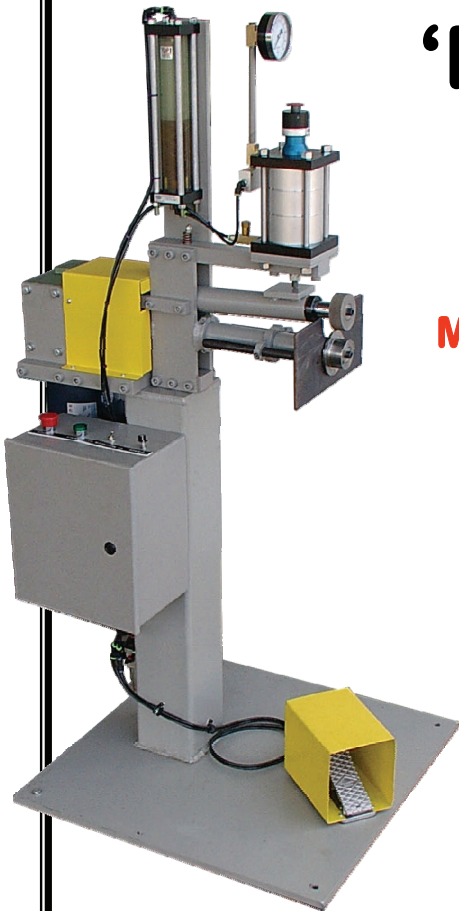
'Rotary Machine'

**Beads, Crimps,
Slits & Flanges**

**Automatic Feed &
Engage Feature
Leaves Both Hands
Free to Handle Part!**

Model DFRF-1410 Specifications:

- 1.25" Diameter Roll Shafts
- Heavy Duty Roller Bearings
- Variable Speed Reversible Motor Drive
- 1 HP , 110V Electric
- FORWARD / REVERSE Capabilities
- 10" Throat - 14 Gauge Capacity
- Full Selection of Rolls
- Full Hardened Tool Steel Back Plate
- Maintains maximum Torque at lower speeds
- 1 Year Warranty on Machined Parts



**Hydraulically
Actuated**

*Recommended for Flanging Operations



**Pneumatically
Actuated**

Special Safety Features

**Foot Operation Leaves
Hands Free to Handle
Metal Being Formed!**

**Forming Rolls will Stop &
Retract Automatically to
Load a New Part!**

**Forms Either
Round or Flat Sheets**

**Foot Pedal Controls
Clamping Force**

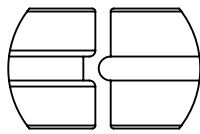


Made in the USA

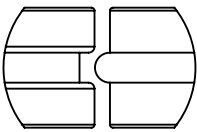
DUCTFORMER

3991 Green Park Rd. St. Louis, MO 63125
Phone ~ 314.631.1416 Fax ~ 314.631.3003

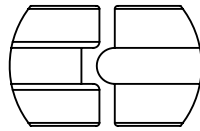
www.ductformer.com



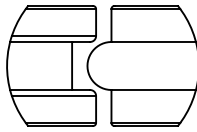
1/4" BEAD



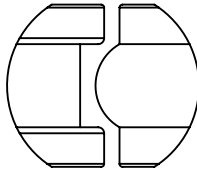
5/16" BEAD



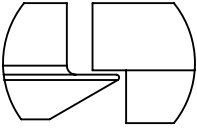
3/8" BEAD



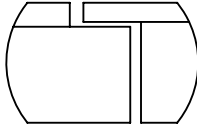
1/2" BEAD



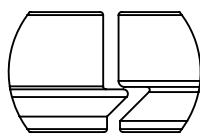
1" BEAD



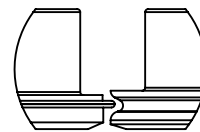
3/8" FLANGE



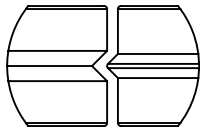
1/2" FLANGE



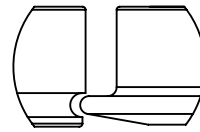
GORE
EDGE



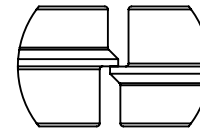
ELBOW
EDGE



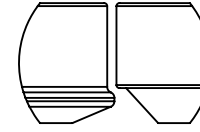
V GROOVE



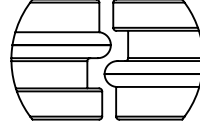
TURNING



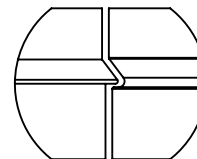
SHEAR



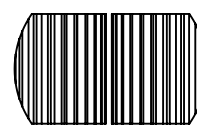
OFFSET
SWEDGE



OGEE



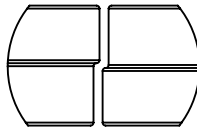
FIRE DAMPER



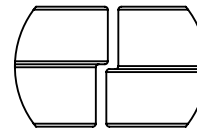
2" WIDE
CRIMP ROLL



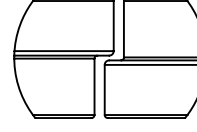
COMBO 2" CRIMP
& 5/16" BEAD



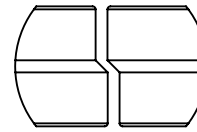
1/16" STEP



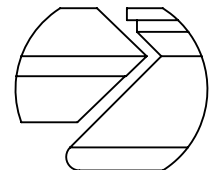
1/8" STEP



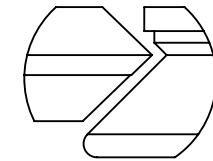
3/16" STEP



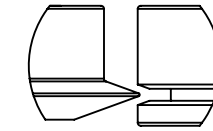
45° STEP



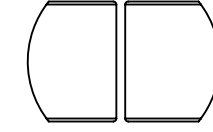
FLAT HEM 3/8"
STEP 1



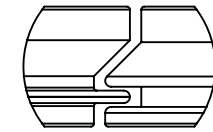
FLAT HEM 1/4"
STEP 1



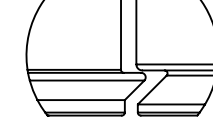
FLAT HEM
STEP 2



FLAT HEM
STEP 3



SPIN COLLAR
STEP 2



SPIN COLLAR
STEP 1

